

This map is your guide to exploring the Margaret River Region from Busseton through to Augusta. It also covers the towns of Margaret River, Dunsborough, Cowaramup and Prevelly. This map is to be used as a guide only and does not include all roads in the region. Please call businesses ahead to confirm opening times.

OPENING TIMES

The majority of attractions in the Margaret River region are normally open 7 days a week, 10am to 5pm. Please enquire at a local Visitor Centre, visit www.margaretriver.com or phone the operator for exact opening times.
* Winter operating hours may vary

ATTRACTIONS

- 34 Degrees South Olive Oil (M7)
- (08) 9757 4045 • Open Wed-Sun & Public Holidays 10am to 4pm
- A Maze'n Margaret River (N4)
- (08) 9758 7439 • Open daily 9am to 5pm
- Anniebrook Wine & Flower Emporium (F5)
- (08) 9755 1155 • Open Sat-Thu 9.30am to 4.30pm, Closed Fri
- Augusta Historical Museum (Augusta C11) (08) 9758 0465
- Sep-Apr & school holidays 11am to 4pm, May-Aug 1pm to 3pm
- Augusta Mini Golf (Augusta D12)
- 0457 360 295 • Open from 10.30am weekends & hols
- Belview Shell Collection (O4)
- (08) 9757 6342 • Open Fri-Wed 9am to 5pm
- Blackwood Meadery (T6) (08) 9758 2332 • Open Thu-Mon 10am to 4.30pm. Tue & Wed by appointment. Open daily during holidays
- Boranup Forest Maze (T4)
- 04627 271 596 • Open daily dawn until dusk
- Busseton Jetty (Busseton H4) (08) 9754 0900 • Interpretive Centre open daily. Underwater Observatory & Train weather permitting
- Calgardup Cave (F2)
- Candy Cow (Cowaramup G1)
- (08) 9755 9155 • Open daily 10am to 5pm
- Cambray Sheep Cheese (Nannup)
- (08) 9756 2037 • Open daily 9am to 4.30pm
- Cape Leeuwin Lighthouse (Z5)
- (08) 9758 1920 • Open daily 9am to 5pm
- Cape Lavender Tea House (E2)
- (08) 9756 6809 • Open daily from 10am to 5pm
- Cape Naturaliste Lighthouse (A2)
- Christmas in Karridale (U4) (08) 9758 5007 • Open Thu-Sun 10am to 5pm, daily school holidays
- Cookies Galore (O4)
- (08) 9758 7473 • Open Mon-Sat 7am to 4pm.
- Country Life Farm (C3)
- (08) 9755 3707 • Open daily 9.30am to 5pm
- Eagle Bay Olives (C3)
- (08) 9755 3188 • Open Fri-Sun 10.30am to 5pm, daily Dec-Jan
- Eagles Heritage (N3)
- (08) 9757 2960 • Open daily 10am to 4pm
- Gabriel Chocolate (G2)
- (08) 9756 6689 • Open daily 10am to 5pm
- Giants Cave (O2)
- HMAS Swan Dive Wreck (B4)
- Jewel Cave (W4)
- (08) 9757 7411 • Open daily 9am to 5pm
- Lake Cave & Events Deck (O2)
- (08) 9757 7411 • Open daily 9am to 5pm
- Mammoth Cave (O3)
- (08) 9757 7411 • Open daily 9am to 5pm
- Margaret River Chocolate Company (I3)
- (08) 9756 6555 • Open daily 9am to 5pm
- Margaret River Dairy Company (L4)
- 08 9750 6600 • Open daily 9.30am to 5pm
- Margaret River Farmers Markets (M.R. C6)
- Every Saturday morning
- Margaret River Fudge Factory (M.R. G4)
- (08) 9758 8881 • Open daily 10am to 5pm
- Margaret River Nougat Co. (I3)
- (08) 9755 5539 • Open daily 10am to 5pm
- Margaret River Nuts & Cereals (I4) (08) 9755 6770 • Open daily 9am to 4.30pm & 9am to 5pm school holidays
- Margaret River Provadore (I3)
- (08) 9755 6355 • Open daily 9am to 5pm
- Margaret River Regional Wine Centre (Cowaramup G1)
- (08) 9755 5501 • Open Mon-Sat 10am to 7pm, Sun 10am to 6pm
- Margaret River Silk Road (I4)
- (08) 9756 6401 • Open daily 10am to 5pm / Cafe Fri to Sun 10am - 4pm
- Millers Ice Cream Farm Cafe (K4)
- (08) 9755 9850 • Open daily 10.30am to 3.30pm (peak 10am - 9pm)
- Millers Ice Cream Town Shop (M.R. G4) (08) 9758 8886
- Open daily 10.30am to 5.30pm, peak times 10am to 9pm
- Moodyne Cave (W4)
- (08) 9757 7411 • Open Tue & Fri from Jun to Dec
- Moon Haven Natural Products (Cowaramup G1)
- (08) 9755 5470 • Open daily 10am to 5pm
- Naturaliste Reptile Park (F6) (08) 9755 1771
- Open 10am to 4pm closed Mondays except public & school holidays
- Ngilgi Cave (O2)
- Old Water Wheel (Y5)
- Olio Bello (K2)
- (08) 9755 9771 • Open daily 10am to 4.30pm
- Pukara Estate (H2)
- (08) 9755 6180 • Open daily 10am to 5pm
- Simmos Recreation (D4)
- (08) 9757 7415 • Open daily 10am to 5pm
- Sunflowers Animal Farm & Farmstay (M2)
- (08) 9757 3343 • Open daily 9am to 5pm
- Supa Putt & Big Ball Golf (I4)
- (08) 9755 6425 • Open daily 10am - last tee off at 4.30pm
- The Berry Farm (O7)
- (08) 9757 5054 • Open daily 10am to 4.30pm
- The Farm House Margaret River (M2)
- (08) 9757 9884 • Open daily 10am to 5pm
- Town Square Markets (M.R. G4)
- 0410 397 555 • 1st & 3rd Sun of month (every Sun in summer)
- Valley of the Giants Tree Top Walk (Walpole)
- (08) 9840 8263 • Open daily 9am to 5pm
- Vasse Virgin (F3)
- (08) 9755 6111 • Open daily 10am to 5pm
- Wardan Aboriginal Cultural Centre (F2)
- (08) 9756 6566 • Open daily 10am to 4pm
- Woolly Windmill (G4)
- (08) 9755 7201 • Open daily 10am to 4pm
- Wulura (D5) (08) 9755 1049
- Open daily 10am to 5pm
- Xscape at the Cape Fun Park (D5)
- (08) 9750 5150
- Yahava KoffeeWorks (N4)
- (08) 9757 2900 • Open daily 9am to 5pm
- Yallingup Maze (F2)
- (08) 9756 6500 • Open daily 9am to 5pm
- Yallingup Coffee Roasting Company (Dunsborough C1)
- (08) 9755 3025 • Open daily 7am to 5pm
- Yallingup Shearing Shed (E3) (08) 9755 2309 • Open daily 10am to 4pm. Shearing demonstrations 11am Sat-Wed. Phone to confirm
- Ye Olde Lolly Shoppe (M.R. F4) (08) 9758 7555
- Open daily Mon-Sat 10am to 5pm Sun 10am to 4pm
- 0410 597 541 • Open daily 10am - 5pm

BREWERIES

- Bootleg Brewery (H3)
- (08) 9755 6300 • Open daily 11am to 6pm
- Bush Shack Brewery (D3)
- (08) 9755 2848 • Open Sun-Thu 10am to 5pm, Fri-Sat 10am to 6pm
- Cheeky Monkey Brewery & Cider (I2)
- (08) 9755 5555 • Open daily 10am to 6pm
- Colonial Brewing Co (L5)
- (08) 9758 8177 • Open daily 11am to 6pm
- Cowaramup Brewing Company (J5)
- (08) 9755 5822 • Open daily 11am-6pm
- Duckstein Brewery (G2)
- (08) 9755 6500 • 12pm-3pm daily
- Eagle Bay Brewing Co (I3)
- (08) 9755 3554 • Open daily 11am to 5pm

DISTILLERIES

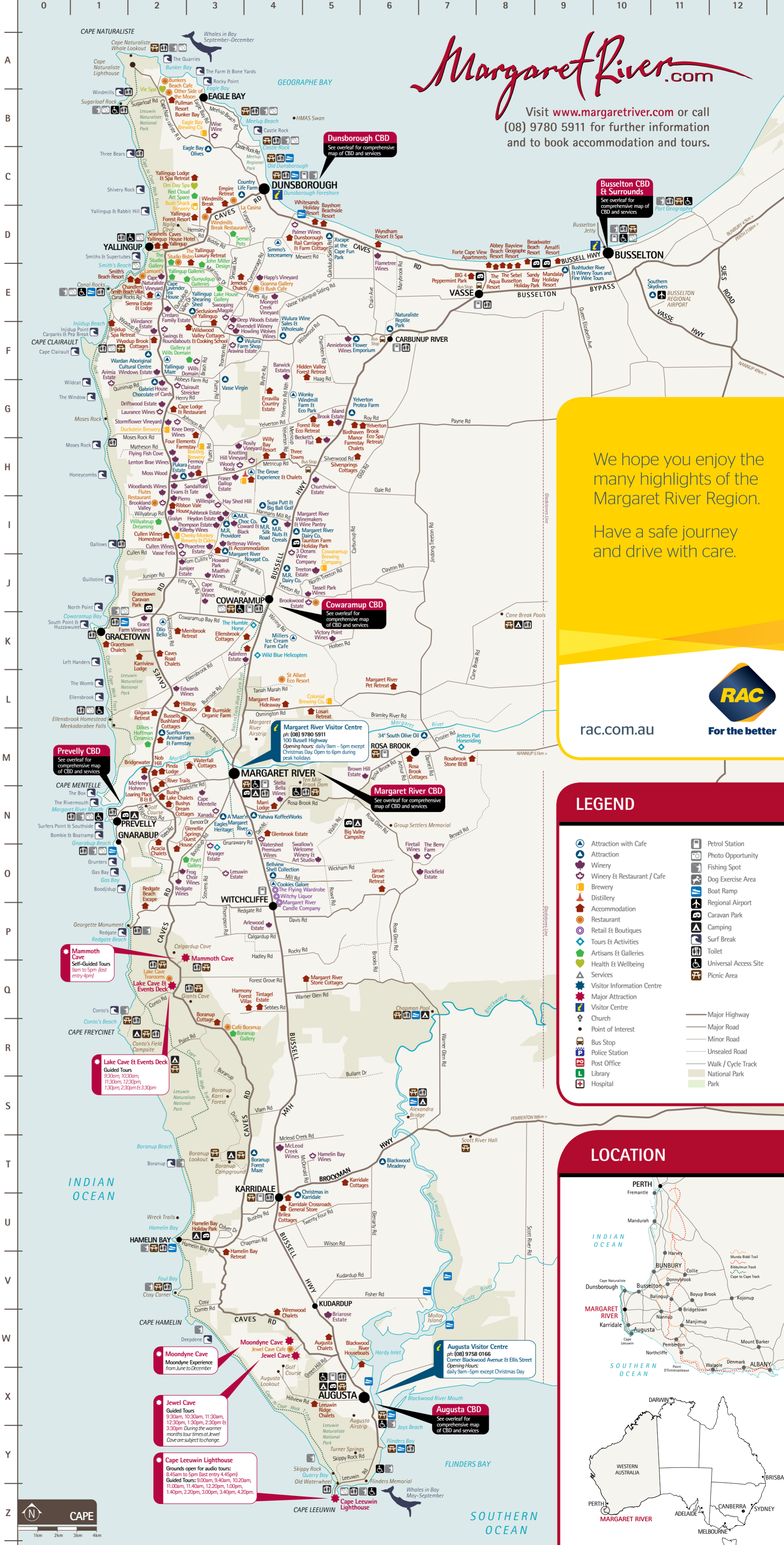
- The Grove Experience (H4)
- (08) 9755 7458 • Open daily 9am to 5pm

WINERIES

- 34 Degrees Wine Company (I4)
- (08) 9756 5656 • Open daily 9am to 3pm
- Adinferrn Estate (K4)
- (08) 9755 5272 • Open daily 11am to 5.30pm
- Aravina Estate (F3)
- (08) 9750 1111 • Open 10am to 5.00pm
- Arimia Estate (G1)
- (08) 9755 2605 • Open 10am to 5pm
- Arlewood Estate (F4)
- (08) 9757 6676 • Open daily 10am to 5pm
- Asbrook Estate (I3)
- (08) 9755 6262 • Open daily 10am to 5pm
- Barwick Estates (F4) (08) 9755 7100
- Open by appointment
- Beckett's Flat (H5) (08) 9755 7402
- Open Wed-Mon 10am to 5pm
- Bettany Wines (I3)
- (08) 9755 5539 • Open daily 10am to 5pm
- Brianose Estate (W5)
- (08) 9758 4160 • Open daily 10am to 4.30pm
- Brookland Valley Vineyard (I2)
- (08) 9755 6042 • Open daily 10am to 5pm
- Brookwood Estate (J5)
- (08) 9755 5604 • Open daily 11am to 5pm
- Brown Hill Estate (M6)
- (08) 9757 4003 • Open daily 10am to 5pm
- Cape Grace Wines (I3)
- (08) 9755 9689 • Open daily 10am to 5pm
- Cape Mentelle Vineyards (N3)
- (08) 9757 0812 • Open daily 10am to 4.30pm
- Cape Naturaliste Vineyard (E2)
- (08) 9755 2536 • Open daily 10.30am to 5pm
- Churchview Estate (H5)
- (08) 9755 7200 • Open Mon-Sat 10am to 5pm
- Clairault Strecker (G2)
- (08) 9755 6225 • Open daily 11am to 4pm
- Coward & Black (I3)
- (08) 9755 6355 • Open daily 9am to 5pm
- Credera Family Estate (E2)
- (08) 9756 6520 • Open daily 10.30am to 5.00pm
- Cullen Wines (I2)
- (08) 9755 5277 • Open daily 10am to 4.30pm
- Deep Woods Estate (E3) (08) 9756 6066
- Open Wed-Sun 11am to 5pm Daily on holidays
- Driftwood Estate (G2)
- (08) 9755 6323 • Open daily 10am to 5pm
- Edwards Wines (L2)
- (08) 9755 5999 • Open daily 10.30am to 5pm
- Evans & Tate (H2)
- (08) 9755 6244 • Open daily 10.30am to 5pm
- Evot Wines (no ref)
- 0407 131 080 • internet & phone sales only
- Fermy Estate (H2)
- (08) 9755 6593 • Open daily 10am to 5pm
- Firetail Wines (O6)
- (08) 9757 5156 • Open daily 11am to 5pm
- Flamtree Wines (D6)
- (08) 9756 8577 • Open daily 10am to 5pm
- Flying Fish Cove (H2)
- (08) 9755 6800 • Open daily 11am to 5pm
- Fraser Gallop Estate (H3)
- (08) 9755 7553 • Tastings by appointment
- Frog Choir Wines (O2)
- 0427 777 787 • internet & phone sales only
- Grace Farm Vineyard (K2)
- 0436 930 527 • Tastings by appointment
- Grainy Estates (K4)
- (08) 9755 6245 • Open daily 10.30am to 4.30pm
- Hamelin Bay Wines (T5)
- (08) 9758 6779 • Open daily 10am to 5pm
- Happs Vineyard (D4)
- (08) 9755 3300 • Open daily 10am to 5pm
- Hay Shed Hill Wines (I3)
- (08) 9755 6046 • Open daily 10am to 5pm
- Heydon Estate (I3)
- (08) 9755 6995 • Open daily 10am to 5pm
- House of Cards (G2)
- (08) 9755 2583 • Open daily 10am to 5pm
- Howard Park & Madfish Wines (J3)
- (08) 9756 5200 • Open daily 10am to 5pm
- Howling Wolves Wines (F3)
- (08) 9755 7409 • Open daily 10am to 5pm
- Island Brook Estate & Chalets (O5)
- (08) 9755 7501 • Open daily 10am to 5pm
- J&K Wines
- (08) 9316 2188 • internet & phone sales only
- Juniper Estate (J2)
- (08) 9755 9000 • Open daily 10am to 5pm
- Killerby Wines (I2)
- (08) 9750 4000 • Open daily 11am to 5pm
- Leeuwin Estate (O3)
- (08) 9755 6776 • Open daily 10am to 5pm
- Lentor Brae Wines (H2)
- (08) 9755 7733 • Open daily from 11am to 5pm
- Lamont's Smiths Beach (E2)
- (08) 9750 1299 • Open daily b/fast, lunch & dinner
- Laurence Wines (G2)
- (08) 9750 4000 • Open daily 11am to 5pm
- Leeuwin Estate (O3)
- (08) 9757 9600 • Open daily 10.30 to 4.30
- Blackfield Estate (O7)
- (08) 9757 6354 • Open daily 10am to 5pm
- Mos Wood (H2)
- (08) 9757 5006 • Wed to Sun 11am to 5pm
- Rosily Vineyard (H3)
- (08) 9755 6336 • Cellar door open school holidays only
- Sandalford Wines (H3)
- (08) 9755 6213 • Open daily 10am to 5pm
- Settlers Ridge Organic Wines (Cowaramup F2)
- (08) 9755 5883 • Open daily 10am to 5pm
- Stella Bella Wines (N4)
- (08) 9758 8611 • Open daily 10am to 5pm
- Stormflower Vineyard (G2)
- (08) 9755 6211 • Open Daily 11am to 5pm
- Swallows Welcome Winery & Art Studio (O5)
- (08) 9757 6348 • Open Tue-Sun 11am to 4.30pm
- Swings (M.R. E4)
- (08) 9758 7155 • Open Daily 10am to Late
- Swings & Roundabouts (F2)
- (08) 9756 6640 • Open daily 10am to 5pm
- Swooping Magpie (E3)
- (08) 9756 6227 • Open daily 10am to 5pm
- Tassel Park Wines (I5)
- (08) 9755 5440 • Open daily 10.30am to 5pm
- The Berry Farm (O7)
- (08) 9757 5054 • Open daily 10am to 4.30pm
- Thompson Estate (I3) (08) 9755 6406
- Open Tue-Sun 11am to 5pm, public holiday long wknd's
- Treton Estate (J5)
- (08) 9755 5481 • Open daily 11am to 5pm
- Vasse Felix (I2)
- (08) 9756 5000 • Open daily 10am to 5pm
- Victory Point Wines (K5)
- 0417 954 655 • internet & phone sales only
- Voyager Estate (H3)
- (08) 9757 6354 • Open daily 10am to 5pm
- Watershed Premium Wines (N4)
- (08) 9758 8633 • Open daily 10am to 5pm
- Willespie (H3)
- (08) 9755 6248 • Open daily 10.30am to 5pm
- Wills Domain (F3)
- (08) 9755 2327 • Open daily 10am to 5pm
- Windance Estate (F2)
- (08) 9755 2923 • Open daily 10am to 5pm
- Windows Estate (F2)
- (08) 9756 6655 • Open daily 10am to 5pm
- Wise Wine (B3)
- (08) 9750 3100 • Open daily 10am to 5pm
- Woodlands Wines (H2)
- (08) 9755 6226 • Open Daily 10am - 5pm
- Woody Nook (H3)
- (08) 9755 7547 • Open daily 10am to 4.30pm
- Yanada Wines (N3)
- (08) 9758 9521 • Open daily 10am to 5pm

BOOK ONLINE

Visit www.margaretriver.com to book accommodation and tours online.



Visit www.margaretriver.com or call (08) 9780 5911 for further information and to book accommodation and tours.

We hope you enjoy the many highlights of the Margaret River Region. Have a safe journey and drive with care.



rac.com.au

For the better

LEGEND

- Attraction with Cafe
- Attraction
- Winery
- Winery & Restaurant / Cafe
- Brewery
- Distillery
- Accommodation
- Restaurant
- Retail & Boutiques
- Tours & Activities
- Artists & Galleries
- Health & Wellbeing
- Services
- Visitor Information Centre
- Visitor Centre
- Church
- Point of Interest
- Bus Stop
- Police Station
- Post Office
- Library
- Hospital
- Petrol Station
- Photo Opportunity
- Fishing Spot
- Dog Exercise Area
- Boat Ramp
- Regional Airport
- Caravan Park
- Camping
- Surf Break
- Toilet
- Universal Access Site
- Picnic Area
- Major Highway
- Major Road
- Minor Road
- Unsealed Road
- Walk / Cycle Track
- National Park
- Park

LOCATION



We would love to hear from you. Please share your extraordinary experiences and stay up to date with photos, information, specials & events in the Margaret River region!

- Rate us on TripAdvisor: Margaret River Visitor Centre
- Like us on Facebook: Margaret River Wine Region
- Follow us on Twitter: @MargaretRiverAu
- Follow us on Instagram: @margaretriver

TRUST THE TICK AND THE "i"

The distinctive "tick" logo displayed by accredited tourism businesses provides you with an assurance that the tourism business has a proven commitment to the highest quality of service. For quality visitor servicing, look for the yellow italic "i" which indicates an accredited visitor centre.

CAVE AND LIGHTHOUSE TOURS

Jewel, Lake, Mammoth and Moodyne Caves and Cape Leeuwin Lighthouse offer some of the most extraordinary experiences in Western Australia. Moodyne Cave tours operate from June to December and all other sites are open daily, with the exception of Christmas Day.
*Additional tours are run during school holidays and long weekends.

RESTAURANTS AND CAFÉS

A Maze 'N' (Cape N4) 9am-5pm daily
Augusta Hotel Motel (Augusta C11) 12pm-2pm & 6pm-8.30pm
Arc of Iris (M.R. G4) Open Tues-Sun 6pm-late
Blue Ginger Fine Foods & Cafe (M.R. E6) 7.30am-8am/4pm/2pm
Brookwood Estate (Cape J5) 11am-3pm daily
Bunkers Beach Cafe (Cape A2) daily 8.30am-4pm
Cafe Bonus (Cape R3) Tue-Sun 8am-3/4pm
Caves House Hotel Yallingup (Cape D2) Open Daily 8am-9pm
El Rio (M.R. F4) Open Daily 3pm - Late
Gnarabur (Prevelly K1) Mon-Fri 4pm-late, Sat & Sun 12pm-late
Goanna Gallery & Bush Cafe (Cape E4) Wed-Sun 9am-3pm
Jewel Cave Cafe (Cape W4) 9am-5pm daily
Katch Up Seafood Grill & More (M.R. G4) 12pm-9.30pm daily
La Casina (Cape C3) Dinner-Tues-Sun 5.30-late, lunch Fri-Sun 12pm-2.30pm
La Scarpetta Trattoria (M.R. C7) daily for b/f & dinner. Closed Tue night
Lake Cave Tearooms (Cape D2) 9am-5pm daily, Closed Xmas
Lamont's Smiths Beach (Cape E2) daily b/f & lunch & dinner
Leewin Lighthouse Cafe (Augusta K8) 9am-4.30pm daily
Maharaja R. E4 Restaurant (M.R. D6) 5.30pm-late daily
Margaret River Chocolate Company (Cape I3) daily 9am to 5pm
Margaret River Hotel (M.R. F4) Open daily for lunch and dinner
Morries Anytime (M.R. G4) Open daily 7.30am-late
Muster (M.R. F4) Open daily 7am-late
Olio Bello (Cape K2) Open daily 11.30am-3.30pm
Other Side of the Moon (Cape B2) Open daily from 7am til late
Quality Margaret River (M.R. D4) Open daily for b/f & d dinner
Sails Too (M.R. F4) 8am-3pm daily
Sea Gardens Cafe (Prevelly I1) Open daily 7.30am - 8.30pm
Settlers Tavern (M.R. F4) Bistro open 12noon-8.30pm daily
Squidfish Fish & Chips MR (M.R. F4) Open daily for lunch & dinner
St Allard Eco Resort (Cape L4) Open daily 8am - 4pm
The Grove Experience (Cape H4) 9am-5pm daily
The Studio Bistro (Cape D2) Wed-Mon 10am-5pm Fri & Sat 10am-late
White's Et Roundabouts Company (Cape I3) 7.30-3.30pm daily (closed winter)
Windmills Break Restaurant (Cape C3) daily b/f & d-thu-mon dinner

WINE AND FOOD

3 Oceans Wine Company (Cape I4) 9am-3pm daily
Aravina Estate (Cape F3) 10am-5.00pm daily
Arima Estate (Cape G1) 10am-5pm daily
Brookwood Estate (Cape J5) 11am-3pm daily
Clairstar Winery (Cape G2) Open daily 11am - 4pm
Cullen Wines (Cape I2) 10am-4pm daily
Driftwood Estate (Cape G2) 10am-5pm Thu-Mon
Flutes Restaurant (Cape I2) 11am-4pm daily
Hamelin Bay Wines (Cape T5) 12pm-3pm daily
Hay Shed Hill Wines (Cape I3) 9am-3.30pm daily
Knee Deep Wines (Cape G2) 12pm-4pm daily
Knottling Hill Vineyard (Cape H4) 11am-5pm daily
Laurance Wines (Cape G2) 11am-3pm daily
Leewin Estate (Cape O3) 12pm-3pm daily, dinner Sat night
Margaret River Provadore (Cape I3) 9am-3pm daily
Palmer Wines (Cape D4) Thu-Mon from 12pm
Rivendell Winery (Cape F3) Open Thur to Mon 10am to 4pm
Swings (M.R. E4) Open Daily 10am - Late
Swings Et Roundabouts (Cape H4) Wed-Sun from 12 noon
Swooping Magpie (Cape E3) 10am-5pm daily
The Berry Farm (Cape O7) 10am-4.30pm daily
Vasse Felix (Cape I2) 12pm-3pm 7 days
Voyager Estate (Cape N3) 10am-4.30pm daily
Watershed Premium Wines (Cape N4) Cafe 10am-4pm Restaurant 12pm-3pm
Willow Domain (Cape F3) 12pm-3pm daily
Wise Wine (Cape B3) 9am-5pm daily, from 6pm Fri & Sat
Woody Nook (Cape H3) 10am-4pm daily
Xanadu Wines (Cape N3) Wed-Sun for lunch

HEALTH AND WELLBEING

AMR & Margaret River Physiotherapy (M.R. G4)
Augusta Physiotherapy (Augusta C11)
Body Bliss Margaret River (M.R. G3)
Body Club Fitness Centre (M.R. E6)
Cowaramup Physiotherapy (Cowaramup E2)
Margaret River Renewal Clinic (M.R. G3)
Om Day Spa (Cape C3)
Rose D'Neil (No Ref)
Vic Spa Pullman Resort Bunker Bay (Cape B2)

TOURS AND ACTIVITIES

(departure locations vary, please contact a local Visitor Centre)
34 Degrees South Photography (No Ref) 0403 501 644
Albatross Charters (No Ref) 0499 111 322
All Sea Charters (No Ref) 0417 794 008
Augusta Boat Hire (Augusta C11) 0499 600 401
Augusta Eco Cruises (No Ref) 08 9758 4003
Australian Pinnacled Tours (tours from Perth) 1300 551 687
Az Ur Like It Tours (No Ref) 08 9757 9746
Bushbucker River Et Winery Tours and Deluxe Wine Tours (M.R. F6) 08 9757 9084
Busselton Cycles Et Repairs (Busselton J4) 08 9752 2550
Cape Mentelle Vineyards (Cape N3) 08 9757 0812
Cape to Cape Explorer Tours (M.R. E6) 0459 452 038
Cape to Cape Wine Tours Et Charters (No Ref) 0427 717 057
Cellar d'Or Winery Tours (No Ref) 0428 179 729
Cheers Wine Et Scenic Tours (No Ref) 08 9757 2270
Dirty Detours Mountain Bike Adventures (No Ref) 08 9758 8312
Dolphin Discovery Centre (No Ref) 08 9791 3088
Go In Style Luxury Transport (M.R. G6) 0429 728 687
Harvest Tours (No Ref) 08 9757 4562
Jesters Flat Horseriding (Cape M7) 08 9757 3850
Josh Palmater Surf Academy (No Ref) 0413 843 426
Koond Dreaming (No Ref) 0419 908 742
Legend Charters (No Ref) 08 9757 9111
Lifestyle Margaret River/The Margaret River Lady (No Ref) 0415 970 522
Margaret River Climbing Co (No Ref) 08 9758 7671
Margaret River Cycles Et Repairs (M.R. D6) 0439 910 064
Margaret River Discovery Co (No Ref) 0409 110 067
Margaret River Photography Spa (No Ref) 0405 561 129
Margaret River Stand Up Paddle Et Kitesurfing 0419 959 053
Margaret River Surf School / Surf Shop (Prev K1) 0419 917 166
Margaret River Tours (No Ref) 0417 948 933
Margaret River Vintage Wine Tours (No Ref) 08 9757 2747
Margaret River with Neil McLeod (No Ref) 0416 180 493
Margies Big Day Out Beer and Wine Tours (No Ref) 0409 377 809
Miss Flinders Eco River Tours (No Ref) 08 9750 5500
Naturaliste Charters (Dunsborough C1) 0400 511 054
Saturation Surfari (No Ref) 1300 449 669
Southern Skydivers (Cape E11) 08 9753 7700
South West Coastlines (Busselton I5) 0459 280 329
Taste the South (No Ref) 0438 210 973
The Chauffeur Bus (No Ref) 0437 770 564
The Horse Resort (No Ref) 08 9757 4444
The Humble Horse (Cape K4) 0434 905 675
Top Drop Tours (No Ref) 0407 443 860
Voyager Estate (Cape O3) 08 9757 6354
Wild Blue Helicopters (Cape K4) 1300 735 63
Wine For Dudes (No Ref) 0427 774 984

ARTISANS AND GALLERIES

B.K. Photo Gallery (M.R. F3) 1300 855 165
Borunup Gallery (Cape R3) 08 9757 7585
Dilkes-Hoffman Ceramics (Cape M2) 08 9757 2998
Frances Andrijich Photography (Perth) 0411 864 242
Gallery at Wills Domain (Cape F3) 08 9755 2327
Goanna Gallery Et Cafe (Cape E4) 08 9759 1477
Gunyulup Galleries (Cape E2) 08 9755 2177
JahRoc (M.R. C7) 08 9758 7200
John Miller Design (Cape D3) 08 9756 6336
Lake House Gallery (Cape E3) 0428 574 237
Margaret River Gallery (M.R. F3) 08 9757 2729
Margaret River Picture Framing Et Print Gallery (M.R. D6) 08 9757 3424
Paget Gallery (Cape O3) 08 9757 6885
Red Cloud Art Space (Cape C3) 08 9755 2411
Sensai Pots (Cape D3) 08 9756 6666
Swallows Welcome Winery Et Art Studio (Cape O5) 08 9757 6348
The Studio Gallery (Cape D2) 08 9756 6371
Turnbridge Gallery (M.R. E4) 08 9758 7900
Warralwhillah Gallery (M.R. F4) 08 9757 9997
Willabyrup Dreaming (Cape I2) 08 9755 6204
Yallingup Galleries (Cape E2) 08 9755 2372

RETAIL AND BOUTIQUES

Australian Lifestyle (M.R. E4) 08 9758 8574
Busselton Cycles and Repairs (Busselton J4) 08 9752 2550
Down South Camping Et Outdoors (M.R. E6) 08 9758 8966
Hillzeez Down South Surf Shop (M.R. F4) 08 9755 0878
Margaret River Bookshop Et Internet Cafe (M.R. F4) 08 9757 3331
Margaret River Candle Company (Cape O4) 08 9757 6245
Margaret River Hemp Co (M.R. G4) 08 9758 8600
Margaret River Wool Company (M.R. D6) 08 9757 9493
Moon Haven Natural Products (Cowaramup G1) 08 9755 5470
Mukau Giftware and Gallery (Cowaramup G1) 08 9755 9922
Sugarman (M.R. G3) 08 9758 7753
The Flying Wardrobe (Cape O4) 08 9757 6647
The Good Olive (M.R. E4) 08 9758 7877
The Larder Margaret River (M.R. E4) 08 9758 8990
Witchy Liquor (Cape O4) 08 9757 6366
Woolworths Margaret River (M.R. D7) 08 9730 0150

SERVICES

Arts Margaret River Et Cinema (No Ref) 08 9758 8884
Augusta Chamber of Commerce (No Ref) 08 9757 4562
Augusta Community Resource Centre (Augusta C10) 0413 843 426
Augusta Margaret River Mail (M.R. F3) 0419 908 742
Augusta Margaret River Shire (M.R. D6 Et Augusta C10) 08 9757 9111
Augusta Margaret River Times (M.R. E4) 0415 970 522
Australian Nursing Federation (No Ref) 08 9758 7671
Australia's South West (No Ref) 0439 910 064
Brand Events (Margaret River Gourmet Escape) 0409 110 067
Cape to Cape Rentals (No Ref) 0405 561 129
Cape to Cape Catchments Group (No Ref) 0419 959 053
Cinefest Oz (No Ref) 08 9757 1111
Coast to Country Weddings (No Ref) 0419 917 166
Cultural Centre (M.R. D6) 0417 948 933
Department of Environment Et Conservation (No Ref) 08 9757 2747
Fly Mechanicals (M.R. F6) 0416 180 493
Jack in the Box (Busselton I4) 0409 377 809
Miss Flinders Eco River Tours (No Ref) 08 9750 5500
Margaret River Bride Et Groom (No Ref) 0400 511 054
Margaret River Chamber of Commerce Et Industry (No Ref) 1300 449 669
Margaret River Historical Society 08 9753 7700
Margaret River Pet Retreat (Cape L6) 0459 280 329
Margaret River Regional Producers Association 0437 770 564
Margaret River Rent a Car (M.R. F6) 08 9757 4444
Margaret River Taxi Service (No Ref) 0434 905 675
Margaret River Wine Association (M.R. E4) 0407 443 860
PR Direct (No Ref) 08 9757 6354
PRT Chartered Accountants (No Ref) 0407 443 860
Queensberry Consulting (No Ref) 08 9757 6354
Riverfresh IGA (M.R. F4) 0407 443 860
Settlers Liquor Store (M.R. F4) 0407 443 860
Small Business Centre South West (No Ref) 08 9757 3751
The Margaret River Theatre Group (No Ref) 0417 173 901
Vet Hospital Margaret River (M.R. E6) 08 9757 2163
Vet Clinic Augusta (Augusta C11) 08 9758 1055
Willcox Et Associates Architects (No Ref) 08 9757 3111
Wine Industry Association of WA (Inc) (No Ref) 08 9284 3355

VISITOR CENTRES

Take advantage of our free service to book accommodation and tours. Our centres are centrally located in Margaret River and Augusta.
Margaret River Visitor Centre (M.R. E4) Cnr Bussell Hwy Et Tunbridge St. (08) 9780 5911
Augusta Visitor Centre (Augusta C11) Cnr Blackwood Ave Et Ellis St. (08) 9758 0166
 email: welcome@margaretriver.com
 website: www.margaretriver.com

OPENING TIMES

The majority of attractions in the Margaret River region are normally open 7 days a week, 10am to 5pm. Please enquire at a local Visitor Centre, visit www.margaretriver.com or phone the operator for exact opening times.
 *Winter operating hours may vary

08 9758 8574
 08 9752 2550
 08 9758 8966
 08 9755 0878
 08 9757 3331
 08 9757 6245
 08 9758 8600
 08 9757 9493
 08 9755 5470
 08 9755 9922
 08 9758 7753
 08 9757 6647
 08 9758 7877
 08 9758 8990
 08 9757 6366
 08 9730 0150

08 9758 7316
 08 9758 1944
 08 9758 0002
 08 9757 2266
 08 9780 5255
 08 9757 9222
 08 6218 9444
 08 9791 9197
 n/a
 0419 749 248
 08 9757 2202
 0427 088 601
 08 9755 1615
 08 9758 7316
 08 9752 5555
 0488 964 352
 08 9751 1122
 08 9727 3737
 08 9757 3806
 0416 936 194
 08 9757 4066
 08 9757 4066
 08 9757 9095
 08 9757 9627
 08 9757 3444
 08 9757 9330
 0419 947 594
 08 9752 2222
 08 9757 0200
 08 9757 3733
 08 9757 3751
 08 9754 8555
 0417 173 901
 08 9757 2163
 08 9758 1055
 08 9757 3111
 08 9284 3355



Lake Cave is a stunning crystal wonderland of timeless beauty. Within the cave a tranquil lake reflects delicate formations that will take your breath away. Lake Cave Et Caweworks Interpretive Centre are Located 17 minutes drive south of Margaret River on Caves Road.



Mammoth Cave is an impressive, gothic-like cave that is home to ancient fossil remains. Explore at your own pace on a self-guided tour with MP3 audio headsets. Don't miss the Mam Walk and amazing wildflowers during spring. Located 15 minutes drive south of Margaret River on Caves Road.



Jewel Cave is home to one of the longest straw stalactites found in any tourist cave in the world. The Preservation Centre includes interpretive displays and a stunning cafe overlooking the forest. Don't miss the Karri Walk. Located 10 minutes drive north of Augusta on Caves Road



Moodyne Cave is a 3 hour exclusive caving experience that features some of the longest pinnacles found in the world. The 'tower of babel' and glistening array of formations leave visitors in awe. Tour departs from Jewel Cave.



BOOKINGS
 For all your tour and accommodation bookings head to margaretriver.com or call 08 9780 5911

Disclaimer - The Augusta Margaret River Tourism Association (AMRTA) has endeavoured to ensure that the information on this map is correct at the time of printing. All companies listed are members of the AMRTA. All persons utilising the services of the Margaret River Map Et Guide do so on the express condition that the user must first satisfy him/herself by independent inquiry or advice as to the suitability of the particular company. Any reliance on the recommendations, advice or referrals provided by AMRTA staff, is entirely at the risk of the user.

