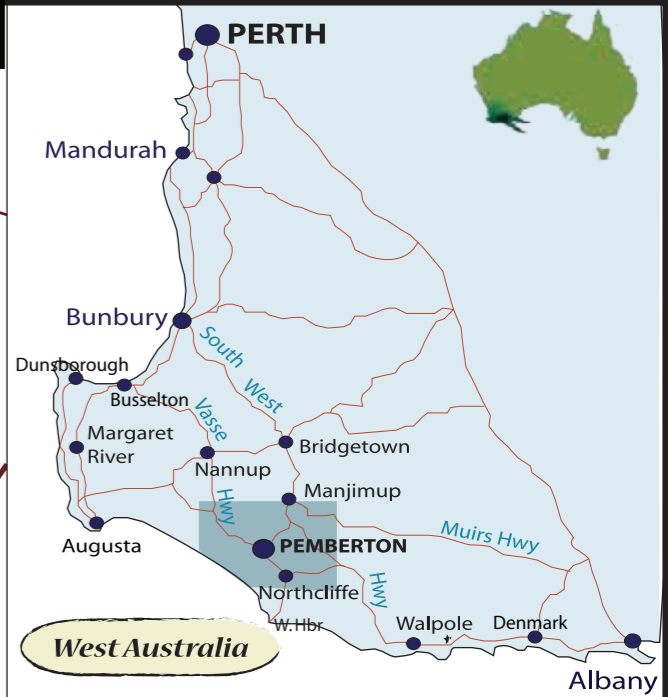
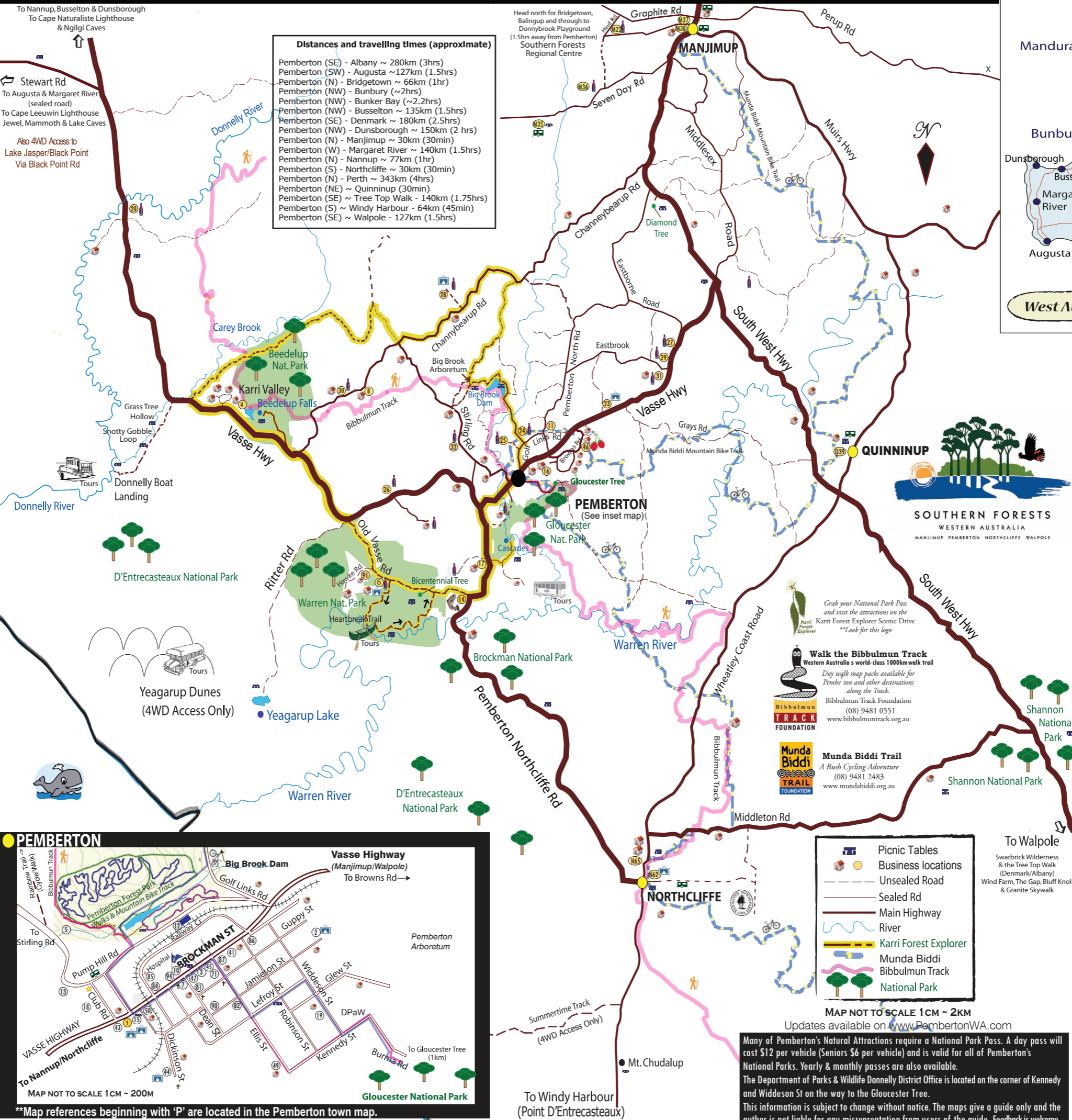


OTHER SERVICES

PEMBERTON TOURS & INFORMATION GUIDE

	Loc	Business Name	Details
Banking	P45	ANZ Agency	@ Pemberton General Store
	P47	Bankwest (Brockman St) 24hr ATM ☎9776 4300	Mon-Thurs 9.30am-4pm (Tues 10am), Fri 9.30am-5pm Closed Lunch 12.30-1.30pm
	P45	Commonwealth Agency	Pemberton Post & Newsagency
	P81	'Emies' IGA Supermarket	ATM in store
Emergency Contacts (Dial 000 for Emergency)	P82	Police ☎9776 1202	
	P85	Hospital ☎9776 4000	
	P84	Old School House Medical Centre ☎9776 1101	
	P47	Pemberton Pharmacy ☎9776 1054	
Fishing Equipment	P45	Pemberton Post and Newsagency (purchase licenses) ☎9776 1034	8am-5pm Mon-Fri 8am-1pm Sat 8am-11am Sun & Pub Hols.
	P86	Pemberton Garage ☎9776 1288	7am-6pm Mon-Sat 8am-6pm Sun
	P3	Pemberton General Store (Lucky 7) ☎9776 1151	7.30am-7.30pm Daily
Fuel & Repairs	P1	Pemberton Bike Company (Bicycle repairs) ☎0467 606 605	
	P86	Pemberton Garage ☎9776 1288	7am-6pm Mon-Sat 8am-6pm Sun
Groceries, Food & Drink	P47	Cellarbrations ☎9776 1161	10am-7pm Mon-Sat
	P81	'Emies' IGA Supermarket ☎9776 1264	8am-6pm Mon-Sat 9am-6pm Sun
	P87	Fox Bros Butchers ☎9776 1294	6am-5pm Mon-Fri 6am-12pm Sat
	P44	Holy Smoke Gourmet ☎9776 0712	9am-4pm Mon-Sat
	P3	Pemberton General Store - Lucky 7 ☎9776 1151	7.30am-7.30pm Daily DVD Rentals
	P41	Pemberton Hotel Bottle Shop ☎9776 1017	10am-10pm Mon-Sat 12-8pm Sun
Hair/Beauty & Massage	P71	Headquarters for Hair ☎9776 1255	9am-5pm Mon-Fri Sat 9am-12pm
	P90	'Elle' Remedial/Clinical Massage & Beauty Therapy ☎9776 0516	Remedial Massage Hot Stones Cranial Sacral Beauty Therapy Sauna/Spa
	P3	Exceptional Health ☎0431 385 791	Massage Hot Stones Sauna/Spa
	91	Mudstone Day Spa ☎9776 0080 ☎0457566138 (Greg)	Spa Treatments Forest Location
Information	P10	Pemberton Visitors Centre ☎9776 1133 www.pembertonvisitor.com.au	9.30am-4.30pm
	N62	Northcliffe Visitors Centre ☎9776 7203 www.northcliffevisitorcentre.com.au	Open 7 days 9am-4pm
		Pemberton Accommodation Association www.pembertonstav.com.au	
	P1	Pemberton Discovery Centre ☎9776 0484 www.PembertonWA.com	Open 7 days 10am-5pm Mon-Sat 10am-2pm Sun
		Pemberton Chamber of Commerce & Industry ☎9776 1745 president@pembertonchamber.org.au	
	P94	Pemberton Community Resource Centre ☎9776 1745	9am-5pm Mon-Fri 10am-12pm Sat
		100.0 FM at attractions on the Karri Forest Explorer Drive	
I.T.		Blueflame Computer Solutions Shane Smith ☎0405 272 355	
Laundromat	P87	Brockman St (Next to Butchers)	6am-7pm daily
Real Estate	P3	LJ Hooker Pemberton 50 Brockman St ☎0418 955 395 ☎9776 0000	9am-5pm Mon-Fri Sat 9-1pm
Weddings		Renata's Celebrations Renata Suckling ☎0488 76 0426	Civil Marriage Celebrant
		Mel's Photography ☎9776 0341	Photographer



HAVE YOU DISCOVERED...?

- Our 3 Famous Climbing Trees**
 - Bicentennial Tree (75m)
 - Diamond Tree (51m)
 - Gloucester Tree (61m)
- National Parks**
 - Beedelup
 - Brockman
 - D'Entrecasteaux
 - Gloucester
 - Shannon
 - Warren
- State Forests**
 - Big Brook Arboretum
 - Big Brook
 - Pemberton Arboretum
 - Pemberton Forest Park
- Waterfalls, Rivers & Lakes**
 - Beedelup Falls
 - Big Brook Dam
 - Cascades
 - Donnelly River
 - Fontys Pool
 - Lake Beedelup
 - Lake Jasper
 - Lefroy Brook
 - Pemberton Pool
 - Warren River
 - Yeagarup Lake
- Forest Drives**
 - Great Forest Trees Drive (Shannon NP)
 - Karri Forest Explorer Drive
 - Moons Crossing (Burma Rd)
 - Windy Harbour (via Northcliffe)
- Bush Walks**
 - Bibbulmun Track
 - Bicentennial Tree to Warren Lookout (2.4km return)
 - Big Brook Dam (4km sealed)
 - Gloucester Tree Walk from town GPO (6km return)
 - Gloucester Tree to Cascades (12km return)
 - Karri Valley/Beedelup Falls walk (4km)
 - Pemberton Forest Park walks (2km)
 - Town Walk
 - Warren NP walk (10km)
- Cycle Trails**
 - Munda Biddi Mountain Bike
 - Boorara Championship Trail
 - Northcliffe Forest Park
 - Pemberton Forest Park
- Other Treasures**
 - Black Point
 - Old growth Karri Forests
 - Pemberton Hydroelectricity Scheme & Pemberton Pool
 - Understory (Sculpture Trail)
 - Mount Chudalup
 - Taskilar Windy Harbour Lighthouse & Salmon Beach
 - Yeagarup Sand Dunes

